

# OAK LEAVES

A PUBLICATION OF THE LOS OSOS / MORRO BAY CHAPTER OF SMALL WILDERNESS AREA PRESERVATION  
P.O. BOX 6442, LOS OSOS, CALIFORNIA 93412-6442 ❖ (805) 528-2579 ❖ MARCH 1997

## *From the President*

### JUST 'WHO' IS SWAP?

As a 501(c)3 organization, the Los Osos/Morro Bay Chapter of SWAP is an all-volunteer, nonprofit organization that operates under a set of by-laws approved by the general membership. The by-laws provide for the offices of President, Treasurer, and Secretary who work with a board to oversee the activities of, and set policy for, SWAP. We also have several persons who have assumed responsibility for specific tasks such as coordinating walks, phoning weeding and watering volunteers, and mailing press releases.

SWAP's board meets on the second Sunday evening of each month to enjoy a potluck supper while we work. Since we do not have an office and want to use our limited funds for actual work in the Elfin Forest rather than for rent, we have been meeting in homes until now. Thanks to the National Estuary Program Office we will now be meeting in their office beginning with our next board meeting.

By our by-laws, all board meetings are open to anyone wishing to attend, or to bring a matter to the attention of the board. To all of you, we extend an invitation to join the board for a working dinner on Sunday, April 13th from 5:30 to 7:30 pm in the National Estuary Program Office at Third and El Moro Streets in Baywood Park. For potluck and agenda details, please call Elsie Deitz, 528-7136. Hope to see some new faces and some new dishes!

*Rose*

### Restoration Project Takes Hold Via Coastal Conservancy Grant

The California Coastal Conservancy has awarded SWAP a \$4000 grant for a renewed attempt at restoration of the eroded slopes of Bush Lupine Point to stabilize the soil and reduce sedimentation in the adjacent riparian and estuarine habitats. Project Coordinator Larry Grimes and Consultant Peter Waldburger have directed a volunteer crew in weekends of work placing "checkerboard" revegetation sites in various severely degraded areas. Some of the project areas showed as much as four feet of soil erosion exposing many pygmy oak roots.

Restoration continued on page 2

### SWAP'S SUCCESS TOUTED NATIONWIDE

President Rosemary Bowker has written the story of SWAP's successful effort to preserve the Elfin Forest in the Fall 1996 issue of EXCHANGE, the Journal of the Land Trust Alliance, a nationwide organization of local and regional land trusts. The lead article in a special issue focusing on Land Trusts and Federal Government Partnerships emphasizes how SWAP's strong working relationships with local and state governmental agencies combined with tremendous local support made public ownership of the Elfin Forest a reality.

Bowker detailed the fund-raising history from successful volunteer-written grant applications to the more than 2,700 individuals, organizations and businesses who contributed to the land fund. The article explains how SWAP provided the manpower for grant writing, local fundraising and community education while the County of San Luis Obispo contributed fiscal credibility and a willingness to accept the parcel as a county natural area once it was purchased.

One of the most interesting aspects of the article is the description of how SWAP and the County jointly applied for and were awarded CalTrans (California Department of Transportation) and ISTEA (Intermodal Surface Transportation Efficiency Act) funds for environmental preservation work.

Bowker credited the work of over 100 volunteers in collaboration with various governmental individuals and agencies in a process of carefully and continuously building community support as the key aspect of SWAP's successful project. The three-page article includes photos of the area and our invaluable volunteers at work. Hundreds of groups with interests similar to ours now know the details of the Elfin Forest Natural Area preservation project of which SWAP members are exceedingly proud.



Janice Verity (above) gathers brush for Karl Appel (at left) to bundle into wattle.

## Restoration *continued from page 1*

Volunteers gathered dead brush on site which was bundled into sand-catching wattles for terracing across the eroded slopes. The natural, bio-degradable wattles stabilize the soil for seeding with site-specific native seeds and native transplants such as sage, buckwheat and bush lupine. The crews spread jute netting to serve as a mulch, seed protector and an additional soil stabilizer. Finally, the areas were isolated with eco-fencing to discourage pedestrian and creature traffic. Once the plants are established, their roots will hold the soil so it won't continue to slip into the estuary.

Using the checkerboard approach to restoration, Grimes and Waldburger hope to target the most severely eroded areas without closing the entire region to public access. The next step is developing educational signage to create public awareness, encourage cooperation and prevent vandalism.

Hardworking volunteers from 7 to 70 worked on the project over several weekends just in time for the recent winter rains. The crews included individuals, families and clubs such as the Filipino Club and Morro Bay High School's FFA group.

SWAP is proud of the work and grateful for the outstanding help of Asela Patague, Delia Rodriguez, Ernesto Caliboso, Jr., Ernesto Caliboso, Sr., Alejo Ubay, Martin Marcos, Alex Tomacder, Alan Reents, Leonos Castillo, Susan, Avery, and Aaron McTaggart, Lee Cunningham, Bonnie Wamsley, Dean Thompson, Mark Thompson, Les Bowker, Ann Calhoun, Janice Verity, Jan-McCarthy, Tony Collins, Karl Appel, Beth Wimer, Kenny Wimer, Tim Rochte, Owen Rochte, Paula Adrian, Yolanda Waddell, Joyce Woodruff, Dane Woodruff, Faylla Chapman, Tara Ross, Brie LaCross, Matt Eppenheimer, Yvette Neal, James Neal, Daniel Heimel, Alison Rose, Nathan Burke, Pat Howell, and especially Peter Waldburger and Larry Grimes who worked from dawn to dusk on this project.

## **HUZZAH FOR YOLANDA & JAY**

Two of SWAP's tireless volunteers have been recognized by Cuesta College for their outstanding volunteer work keeping classical music alive in San Luis Obispo County. Yolanda and Jay Waddell were awarded the Betty Nielsen Volunteer of the Year Award. Now we know what they do when they're not working for SWAP!

**Congratulations to the Waddells for a much deserved honor.**

## Katy Budge Honored As SWAP's Volunteer of the Year



Rose Bowker presents Katy Budge with a print of the Elfin Forest by Ybi VanEkeren in honor of her volunteer work.

She's not a spokesperson, she's not a big donor, she's not even very visible, but Katy Budge is a doer whose quiet, excellent donated work is an essential part of SWAP's public communication efforts which all members see and appreciate. Her volunteer work on newsletter layout and production over the years was singled out for special honors at SWAP's annual Volunteer Recognition Night.

Volunteers gathered at the home of Janice and Roger Verity for "long sandwiches and short speeches" as guests of the SWAP board in appreciation for the hundreds of volunteer hours given to SWAP activities and projects over the year.

President Rosemary Bowker lauded Budge for the professional skills and talents she has performed for SWAP as well as for the local, one-woman-environmental news network she has created with her work for several organizations. Newsletter editor, Pat Grimes cited Budge's outstanding competence, efficiency and thoroughness which make getting the SWAP newsletter out seem effortless.

Besides dinner and relaxed conversation, all volunteers were presented with original art bookmarks created by Janice Verity and Elsie Deitz as reminders of SWAP's appreciation. Many thanks from the board to Volunteer Coordinator, Janice Verity for hosting such a delightful evening in honor of the most important members of SWAP.



Les Bowker and Roger Verity slice the long sandwiches for volunteers.

# THIRD SATURDAY WALKS

**March 15** Take a discovery walk through the Elfin Forest with Yvette and John Nowak. Yvette, a teacher and naturalist, and John, a horticulturist, will turn you into a nature detective, showing you how to find clues about the plants, animals, birds and insects of this small wilderness. You will participate in making soap from flowers of the buckbrush and in grinding acorns the way the Chumash did. For all ages.

**April 19** Wildflowers are at their peak in the Elfin Forest during April. Join Mary Coffeen, author of "Central Coast Wildflowers," for a joyous exploration through the forest's dune scrub, chaparral and groves to find and identify the blooms of its native plants.

**May 17** Get a different view of the Elfin Forest through the lens of your camera on a walk especially for camera bugs of all ages. A local photographer will provide pointers on composition and lighting, as well as how to solve problems of contrast and close-up photography.

**June 21** It's Summer Solstice in the Elfin Forest! Join Teresa Larsen, a naturalist at Rancho El Chorro, to find out what changes take place in plants in preparation for the long, dry summer, and how the other creatures adapt to this. Teresa has a sharp ear and eye for birds as well, and will help you spot and identify them. Bring binoculars.

*Walks begin at 9:30 am (unless otherwise noted) at the north end of 15th Street off Santa Ysabel in Los Osos. Wear comfortable shoes, long sleeves and pants to avoid poison oak and mosquitoes. Please park carefully, avoiding driveways and mailboxes. We ask that you not bring dogs or other pets. The easy paced walks last 1-1/2 to 2 hours.*

*Call 528-4540 evenings for information.*



## MEMBERSHIPS ARE ROLLING IN

Thanks to a great effort by our Membership Committee new and renewed memberships have been arriving daily. Ruth Allen, Elsie Deitz and Robin Knapp are working to recruit new members from our Third Saturday Walk lists and they offered special premiums to entice early renewals. A special walk in the Elfin Forest was given to the earliest renewers, and among them, Nicholas Pier was the lucky winner of an Elfin Forest sweatshirt. Close to 200 people have renewed their memberships during this very successful drive. If you're wondering about your renewal date, check your newsletter label. That's the date you last paid your dues.

Welcome to our new members, and thank you to renewing members for your very important continuing support.



*Walk leader and wildflower expert Mary Coffeen tells tales of the flora.*

## MANAGEMENT PLAN UPDATE

The first hearing on the management plan for the Elfin Forest Natural Area before the SLO County Parks Commission has been continued to their next meeting. Working out the details of these resource guidelines for internal use in the Parks Department has become a very involved process.

Thanks to all who attended to make their views and concerns known. Participation in the process will help refine the document and help us complete this goal. Be sure to put the next SLO County Parks Commission meeting on your calendar: Thursday, March 20th, 6pm, at the SLO Veteran's Memorial Building on Grand Avenue.

## THANK YOU, THANK YOU, THANK YOU

to H. Abrams, A. Alexander, R. Allen, K. Antonel, S. Autrey, R. Avelar, S. Baer, L. Barber, B. Bennett, E. Bowen, S. Boydston, J. Boyd, R. Bracken, E. Brown, W. Brown, J. Burns, F. Bush, W. Butts, A. Calhoun, J. Chadwick, A. Chermak, P. Childers, L. Chipping, A. Clause, N. Conant, M. Conkling, B. Crane, A. Cushing, L. Daniel, K. Davis, B. DeWitt-Moylan, P. DeWitt, J. Dikworth, L. Edgcomb, M. Engle, F. Fairbrother, D. Fourie, J. Frawley, N. Friedman, M. Gates, M. Goldin, K. Gorrindo, S. Gottlieb, M. Graham, J. Grover, W. Hamilton, J. Havlena, K. Heffernon, G. Hensley, A. Hill, I. Hoffman, L. Holman, J.M. Hood, R. Huffman, E. Hutchinson, K. Karikka, W. Kieft, D. Kiel, A. Kimura, K. Kimura, R. Knapp, R. Knight, V. Kovacevich, C. Lancellotti, R. Lane, E. Levine, B. Machado, B. Marshall, L. Martinez, M. McAulay, E. McCracken, S. McGinty, J. Milburn, A. Miller, M. Miller, D. Minnix, K. Morrison, M. Osherenko, A. Owens, C. Pardo, R. Parker, E. Peter, B. Pewitt, L. Phillips, C. Pickett, E. Polk, J. Radabaugh, R. Ralston, I. Reti, C. Riggins, A. Sennett, L. Silva, J. Smalley, L. Smith, S. Sparling, A.D. Stump, B. Taylor, V. Thedaker, L. Thompson, F. Tift, L. Trayser, J. VanCamp, N. Vaughan, F. Villa, L. Wallender, G. Walter, E. Walt, D. Wiedenkiller, N. Wightman, B. Wilson, K. Wimer, B. Wisberg, E. Wondra, J. Wright, and W. Wurster.



and ...  
in memory of Betty Stump



- ADVISORS
- Leslie Bowker, Ph.D., Ecologist
- David Chippling, Ph.D., Geologist
- Charles Dills, Archaeologist
- Mark Dartz & Antoni Arho, Boardwalk Design
- Steve Fabry, Morro Bay Task Force
- Tim Gallagher, SLO County Parks
- Myron Graham, Morro Coast Audubon
- Ray Belknap, SLO Land Conservancy
- Jim Havlena, CPA
- Don Hoffman, Central Coast Natural History Assn.
- David Keil, Ph.D., Botanist
- Bud Laurent, SLO County Supervisor
- Bud & Alice Meyer, C.N.F.S.
- Bill Newman, Friends of the Estuary
- Aryan Roest, Ph.D., Zoologist
- Dave Sears, California State Parks

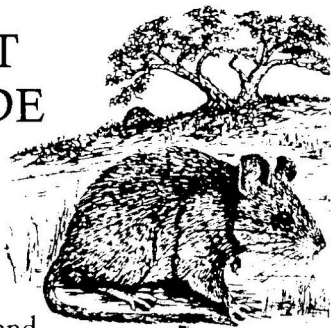
- OFFICERS 1997
- Rosemary Bowker, President
- Yolanda Waddell, Corresponding Secretary
- Jerome Deitz, Treasurer
- Ruth Allen, Membership Chair
- Pat Grimes & Katy Budge, Newsletter Editors

Per Name or Current Resident

Los Osos / Morro Bay Chapter  
 SMALL WILDERNESS AREA PRESERVATION  
 A Non-Profit Public Benefit Corporation  
 P.O. Box 6442, Los Osos, CA 93412 - 6442

Non-Profit Org.  
 U.S. Postage  
 PAID  
 San Luis Obispo, CA 93402  
 Permit No. 112

## ELFIN FOREST POCKET GUIDE AVAILABLE



SWAP is proud to announce the arrival of our latest publication, "Pocket Guide to the Plants and Animals of the Elfin Forest Natural Area."

Edited by Yolanda Waddell with illustrations by Becky McFarland, the extensive, 25-page guide covers 24 mammals, 13 amphibians and reptiles, 110 birds, 121 arthropods, 150 flowering plants and 35 fungi known to occur in the Elfin Forest. The species lists were compiled by Aryan Roest, Ph.D., Ron Ruppert, Jim Royer, V.L. Holland, Ph.D. and Dennis Sheridan. Funds for printing were provided by a grant from the San Luis Obispo County Board of Supervisors' Environmental Projects Fund.

The guide will be available for \$1 on Third Saturday Walks and at Books & Company and Volumes of Pleasure in Los Osos.

Congratulations and thanks to everyone involved for a comprehensive, useful and attractive new publication.

## MEMBERSHIP FORM

Name \_\_\_\_\_

Address \_\_\_\_\_

City/State/Zip \_\_\_\_\_

Phone \_\_\_\_\_

- Member \$12     Defender \$100
- Steward \$25     Champion \$250
- Protector \$50     Life Member \$1000
- I want to help, please call me!

Have you renewed your membership on time?  
 Check out the label on this newsletter for the date you last sent in your membership.

**EVERY membership counts!!**

Make checks payable to SWAP,  
 Mail to Small Wilderness Area Preservation,  
 P.O. Box 6442, Los Osos, CA 93412 - 6442