



# O A K L E A V E S

A PUBLICATION OF THE LOS OSOS/MORRO BAY CHAPTER SMALL WILDERNESS AREA PRESERVATION  
P.O. BOX 6442 LOS OSOS, CALIFORNIA 93412 (805) 528-2579 DECEMBER 1993

## ***A Message From Your President***

While it is not yet a "done deal," we can see an end to our efforts to save the El Moro Elfin Forest.

In September I attended a meeting at the local CalTrans office to go over the sign-off procedures for our \$500,000 ISTEPA grant which comes from federal highway funds. The Elfin Forest is the first California project to be funded under this program.

In October Tim Gallagher (County Parks) and I met with Mary Howe at the State Lands Commission in Sacramento to make sure we had completed all requirements for the \$100,000 that State Lands has approved toward the purchase of the Elfin Forest.

In December Tim and I will go to a meeting of the State Coastal Conservancy in San Francisco at which Project Manager Carol Arnold will ask for board approval of a \$250,000 grant.

And in December we will learn if our Wetlands Grant has been funded. I can't think of a nicer Christmas present for the elves.

If the Wetlands Grant isn't funded, we will need to raise \$150,000 by mid-spring to keep the \$1,350,000 in grants and move ahead with the purchase.

I have been thinking about this a lot. We're just too close to success to not make every effort possible to find the money that we will need. I'm sure you feel the same way.

If 150 people made a \$1000 pledge to the land fund, our board would sleep a lot better at night! I am going to throw this challenge out to you: Will you help? Will you ask your friends who love the Elfin Forest the way you do to make

## **GENERAL MEETING**

**Chumash Elder  
Featured at December Meeting  
Monday, December 6th, 7pm  
South Bay Community Center  
2180 Palisades Avenue, Los Osos**

☆☆☆☆

Pilulaw Khus, Chumash elder and healer, will be the guest speaker at our December quarterly meeting. Pilulaw has a special interest in the Elfin Forest as one of the last relatively undisturbed habitation sites of the Northern Chumash. At SWAP's invitation, she performed a protection ceremony for the Elfin Forest in 1990. She will relate some of the history of the Chumash on the central coast, and will focus on the importance of living in a world where there is respect for differences.

The meeting will also include an election of officers and nominations for new board members. If you are interested in serving on the SWAP Board of Directors or as an officer for the coming year, please call Pat Grimes at 528-3035.

a pledge to the land fund? The SWAP Board intends to do just that. But we can't do it alone.

Why are we asking you for your pledge now? If we don't get the Wetlands Grant, we won't have a lot of time to raise the remaining funds.

As I drove home last night along South Bay Boulevard, the sun was setting and lights were coming on in Los Osos. The Elfin Forest was a quiet contrast to the rest of the community. Let's not lose this special treasure.

*Rose*

## Our Volunteers are Swell!



Hardworking volunteers collect signatures for the Cal Paw Bond Act which will benefit land preservation projects statewide if passed in June 1994.

Many, many thanks to all the volunteers who collected signatures for CAL PAW, staffed booths and guarded crosswalks at the Harborfest and the Octoberfest. (APPLAUSE, APPLAUSE!) Your donation of time and energy is very important. All the members of SWAP appreciate your work to keep our project "out there" in the public consciousness. You were so great, we'll give you a vacation until our next series of outreach events in the spring when we hope you'll do your swell stuff again!

*Visible at low tide, the alluvial fan  
sprays out into the estuary  
mounded silty crags which host  
wildlife dependent on  
fresh and saltwater exchange.  
Now, a snowy egret bobs for insects and crabs,  
ghostly white riparian globe  
amidst the nourishing green.*

*From "Elfin Forest Trail near Morro Rock"  
by N. Shidler*



*The SWAP contingent of "Coastal Cleaners" joined thousands across the state to scour coastal areas while documenting the harmful impact of waste products on marine life. Thanks from all of us to all who participated everywhere.*

## A Reminder about United Way

If you have a payroll deduction plan at work through which you can make contributions to United Way, you can designate SWAP to make a contribution to the Elfin Forest Land Fund.

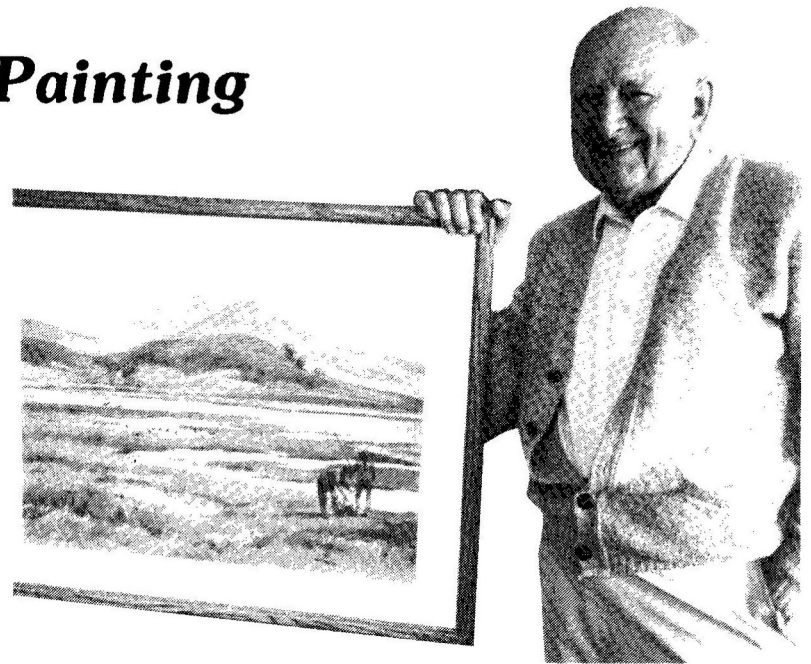
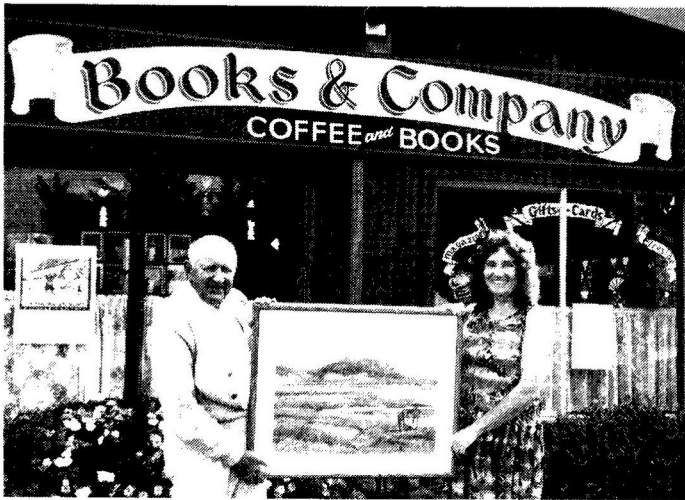
## Tax Deductions for Full Value of Gifts Restored

A victory was scored for all non-profits and donors on August 10, 1993 when President Clinton signed the legislation reinstating the tax law on appreciated property deductions. Gifts of appreciated property are now fully deductible at fair market value for all taxpayers on a permanent basis. This includes gifts of artwork, securities and real estate. This win/win legislation will benefit land preservation projects nationwide.

*One of the things I love most about the natural world is the way it gives you what's good for you even if you don't know it at the time.*

*Pam Houston  
"A Blizzard Under Blue Sky"*

# SWAP Raffles Gibson Painting



*Above left: Stop by Books & Company to get a raffle ticket for the beautiful watercolor of the estuary and Hollister Peak donated to SWAP by George Gibson, shown here displaying his painting along with Ellen Perryess.*

*Above: A closer look at the artist and his watercolor.*

## Third Saturday Walks

- ⊙ December 18 — Shirley Sparling will introduce us to the "Small Ones of the Elfin Forest," the variety of mosses, lichens and plant galls living there. *Please note: This walk begins at 8:30 am.*
- ⊙ January 15 — Dennis Sheridan will lead us on a "Fungus Foray" to discover the fascinating mushrooms and toadstools that appear with the rain.
- ⊙ February 19 — Tom Ruehr will get down to basics with the "Soils of the Elfin Forest and Environs," discussing the soil/plant relationships that characterize the diverse ecosystem of the Elfin Forest.

*Walks begin at 9:30 am (unless otherwise noted) at the north end of 15th St. off Santa Ysabel in Los Osos. Wear comfortable shoes, long sleeves and pants. Please park carefully, avoiding driveways and mailboxes. The easy paced walks last 1-1/2 hours. Call 528-4540 for information.*

Los Osos resident George Gibson, nationally known watercolorist and former Scenic Art Director for MGM Studios, has donated a watercolor painting of the Morro Bay Estuary valued at \$2500 to SWAP to raise funds for purchase of the Elfin Forest. The painting is currently on display at Books & Company, 1001 Santa Ynez at 9th St., Los Osos, where raffle tickets are available for \$1 each or 6 for \$5. Tickets are also available by mail (\$5 minimum order) from SWAP, P.O. Box 6442, Los Osos, CA 93412.

During his 35-year career at Metro-Goldwyn-Mayer, Gibson designed the backdrops and supervised the painting for hundreds of movies including THE WIZARD OF OZ, BRIGADOON, OKLAHOMA, and AN AMERICAN IN PARIS. During those years, he also became a recognized watercolorist, focusing on landscapes, and has served as president of the California Watercolor Society.

## • • • THANK YOU, THANK YOU, THANK YOU • • •

to ... S. Andersen, L. Anderson, R. Appel, J. Bailey, K. Baker, B. Bennett, L. Bennett, G. Berg, Books & Company, R. Bowker, S. Bracken, D. Brown C. Bruzenak, Bank of America Foundation, A. Calhoun, F. Campagna, D. Cantore, C. Carnahan, R. Clark, M. Conkling, J. Cutmore, E. Daugherty, R. DeCamp, J. Deitz, J. Dunn, A. Elijah, V. Fiocca, J. Frawley, M.

Fuller, J. Girolo, F. Griffith, R. Griggs, J. Grover, M. Hamilton, N. Hay, C. Hicks, B. Hill, Home Video, E. Hutchinson, C. Jeffrey, E. Kengel, A. Kimura, S. Knight, La Patisserie, C. Larsen, M. Lusardi, M. Mayfield, R. McCauley, J. McCullagh, D. Minnix, W. Newman, K. Niffenegger, C. Noreen, D. Norwood, A. Owens, N. Page, K. Panetta, M. Parker, M. Parkin, Pest

Control Operators of California, Inc., E. Peter, A. Powers, W. Raflowski, S. Raser, K. Rawlings, C. Riggins, B. Rosenthal, V. Sallaz, C. Sandoval, M. Schwab, V. Senn, S. Sparling, C. Stephens, S. Thompson, M. Topp, United Way of SLO County, N. Vaughan, C. Vienola, G. Walter, J. Warren, and P. Weaver.

ADVISORS  
Leslie Bowker, Ph.D., Ecologist  
David Chipping, Ph.D., Geologist  
Charles Dills, Archaeologist  
Steve Eabry, Morro Bay Task Force  
Tim Gallagher, SLO County Parks  
Myron Graham, Audubon  
Ray Bellknapp, SLO Land Conservancy  
Jim Havlena, CPA  
Don Hoffman, Natural History Association  
David Keil, Ph.D., Botanist  
Bud Laurent, SLO County Supervisor  
Bud & Alice Meyer, C.N.P.S.  
Bill Newman, Friends of the Estuary  
Aryan Roest, Ph.D., Zoologist  
Dave Sears, State Parks

OFFICERS 1993  
Rosemary Bowker, President  
Yolanda Waddell, Corresponding Secretary  
Jerome Deltz, Treasurer  
Barbara Machado, Development Coordinator  
Dominic Perillo, Membership Chair  
Pat Grimes & Katy Budge, Newsletter Editors

Address Correction Requested

Los Osos /Morro Bay Chapter  
**SMALL WILDERNESS AREA PRESERVATION**  
A Non-Profit Public Benefit Corporation  
P.O. Box 6442, Los Osos, CA 93412-6442

Non-Profit Org.  
U.S. Postage  
PAID  
San Luis Obispo, CA 93402  
Permit No. 112

## Memberships needed NOW!

We need your membership urgently. With all the excitement of our land fund drive membership renewals have been forgotten. Our work and our expenses from the general fund for day-to-day operations (xeroxing, mailing, etc.) go on. We anticipate additional expenses to complete the purchase and hope to continue with educational and improvement/revegetation programs in the future. Land preservation is a living responsibility. Check your address label on the front of this newsletter. The date reveals the last time you paid your membership dues. Are you current? Your membership brings you the SWAP quarterly newsletter and it supports our general fund. We're an all-volunteer, non-profit organization so your financial support is critical to our success.

**P L E A S E   R E N E W   N O W !**

## M E M B E R S H I P   F O R M

Name \_\_\_\_\_

Address \_\_\_\_\_

City/State/Zip \_\_\_\_\_

Phone \_\_\_\_\_

- Member \$12       Defender \$100
- Steward \$25       Champion \$250
- Protector \$50       Life Member \$1000
- I want to help — please call me.

Make checks payable to SWAP.  
Mail to Small Wilderness Area Preservation,  
P.O. Box 6442, Los Osos, CA 93412