



OAKLEAVES

A PUBLICATION OF THE LOS OSOS / MORRO BAY CHAPTER of SMALL WILDERNESS AREA PRESERVATION
P.O. BOX 6442, LOS OSOS, CALIFORNIA 93412-6442 ♦ (805) 528-0392 ♦ FEBRUARY / MARCH 2010

SWAP Treasurer's Report For 2009

By Ron Rasmussen, Acting Treasurer

In accordance with the Los Osos/Morro Bay Chapter bylaws there is a summary of the income and expenses of the chapter for the calendar year 2009 on page 2. The amounts have been rounded to the nearest whole dollar.

The major single expense item for this year was construction of a boardwalk extension into the Rose Bowker Grove. Other significant items were publications, including printing of Oakleaves and our Calendar, and office and liability insurance.

In this year, SWAP received a grant from the Hind Foundation in the amount of \$21,260 toward construction of the Rose's Grove boardwalk extension. Of the remaining \$26,325, 58% was from memberships and donations. The balance was from merchandise sales, estimated savings interest, and a grant from the Morro Bay National Estuary Program (MBNEP).

Overall, the total income and expenses were almost the same. The relatively small net income increase is due to estimated savings interest on SWAP's savings certificates in 2009. Also, the increase in total assets is from savings interest. In 2010 the interest yield

Treasurer's Report continued on page 2

Danna Weidner Joins Board

By Yolanda Waddell

Native New Yorker Danna Weidner, like many folks who retire to the Central Coast, lived a very full professional life both in eastern United States and Southern California before moving to Los Osos in 2009. Danna is a Registered Nurse with a Bachelor's in Nursing as well as a Master's degree in Health Care Administration and Business Administration.



After moving to Redondo Beach in 1982, Danna and her husband, Tom, formed an in-home medical care company called Total Pharmaceutical Care. Within eight years the company had grown to include 17 pharmacies and was traded on the stock market. After selling the company, Tom became a special education teacher, specializing in helping students make the transition into community life. Danna says that she "retired six times from six different jobs."

Finally, becoming weary of the burgeoning development of the Redondo Beach area, the couple moved north. What brought them to Los Osos was the Elfin Forest. They had been coming to Los Osos for long weekends for about 20 years, and each time they would walk in the Elfin Forest. Danna said, "We were enchanted with it and drawn to the community."

Danna began helping out with People's Kitchen through her church, and also joined Newcomers Club. She was working at a Newcomers booth last Fall when SWAP Board member Pat Murray stopped to chat. Danna told Pat that she had been meaning to contact SWAP, so Pat invited her to a Board meeting. Now, a few Board meetings later, Danna has accepted the invitation to be an At-Large Board Member of SWAP. Welcome aboard, Danna!

❖ Inside This Issue ❖

- 3 Education Committee Corner
- 3 Unleashed Dogs Maul Pet in Forest
- 4 California Legless Lizard
- 5 Scarlet Pimpernel by Dirk & Bonnie Walters
- 6 Elfin Forest Sightings
- 7 Weed Warrior News
- 8 Coming Up in the Elfin Forest
- 9 Walks in the Elfin Forest
- 10 New and Renewing Members
- 11 SWAP Shoppers Order Form



SWAP BOARD OF DIRECTORS

*The Board of Directors
of the Los Osos/Morro Bay Chapter of
Small Wilderness Area Preservation (SWAP)
consists of the following members:*

Ron Rasmussen, Chair / Treasurer
Pete Sarafian, Vice Chair
Yolanda Waddell, Secretary
Pat Akey, Member at Large
Debbie Levi, Member at Large
Pat Murray, Member at Large

The SWAP Board of Directors meets monthly
on the 2nd Monday at 7 p.m. at
the Community Center of
Sea Oaks Mobile Home Park,
1675 Los Osos Valley Road.

The next meetings are
**Monday, February 8
and Monday, March 8.**

All Board meetings are open to the public.
To confirm the date, time and location
(which are subject to change), call 528-0392.



CONTACT SWAP

If you have questions about SWAP activities
or want to volunteer, please call 528-0392 and
leave a message. A recorded message will give
information about our 3rd Saturday Walks,
Work Saturdays, and other events. If you have
questions, concerns or comments about any
problems in the Elfin Forest, call or write:

Bob Yetter

SLO County Parks Supervising Ranger
1087 Santa Rosa Street, SLO, CA 93408
(805) 781-4417

Owners of dogs off-leash can be cited. If you
witness dogs off-leash, vandalism or obvious
crimes, call the County Sheriff at 781-4550
or Chuck Lowe at 781-4417.

Success of the 2010 Elfin Forest Calendar

By Debbie Levi, Calendar Chair

On behalf of the Calendar Committee, I thank everyone for supporting SWAP's annual fundraiser with purchases of the 2010 Elfin Forest calendar. Also, the success of the calendar would not be possible without our wonderful sponsors and contributors; everybody at SWAP is most appreciative. We are pleased to announce that we sold all of our 2010 calendars!

This is wonderful news because it enables us to use the proceeds for further expansion of our conservation and education efforts. In addition to superb forest maintenance, SWAP is increasing educational opportunities for all County schoolchildren so that future generations can share in nature's wonder.

In 2009, calendar sales also helped financially with the boardwalk extension into the Rose Bowker Grove. This is now easily accessible for everyone to enjoy. Our future plans consist of adding benches in this area.

We look forward to creating next year's calendar which will feature original artwork by local artists. If you are interested in volunteering either as a committee member, sponsor or artistic contributor, please contact calendar@elfin-forest.org.

Enjoy the Forest!

Treasurer's Report continued from page 1

on savings certificates will be well below 1%. Therefore, to ensure that the Elfin Forest survives SWAP will continue to depend on the support of its members and generous donors.

TABLE 1. INCOME AND EXPENSES

TOTAL FUNDS RECEIVED:	\$48,193
TOTAL EXPENSES:	46,926
NET INCOME	1,268*

TABLE 2. BALANCE SHEET

AS OF JANUARY 1, 2009

BANK CHECKING ACCOUNT	\$11,231
SAVINGS (CDs)	43,837
PETTY CASH	50
TOTAL ASSETS	\$55,118

AS OF DECEMBER 31, 2009

BANK CHECKING ACCOUNT	\$11,135
SAVINGS (CDs)	45,124
PETTY CASH	50
TOTAL ASSETS	\$56,309
INCREASE (LOSS)	\$1,191*

** Note: The net income and increase in assets do not agree because SWAP has not yet received a statement of the actual interest earned on our CDs in 2009.*

Education Committee Corner

By Pat Akey; photos by Yolanda Waddell

Our new and improved Education and Docent Committee is making good progress, and will be working hard throughout the coming year. So far, we can be proud of the following: Six Docent Manuals (more to come); Two new Docents, Paul O'Conner and Annette Sheeley; Fifty fliers to be delivered to local schools, inviting teachers to bring their students to the Elfin Forest for nature walks; More teacher involvement; School walks for three Baywood School first grade classes in December, focusing on animals of the Elfin Forest; and passage by the SWAP Board of our request for funds to provide school bus transportation to the Elfin Forest when local schools can't afford it.

In 2010, we will set up training sessions for our docents in learning more about birds, native plants, reptiles and amphibians, and insects. We welcome new docents at any time. If you are interested in becoming a docent, call Pat at 528-4832 or e-mail pata@elfin-forest.org.



Docent Paul O'Conner (kneeling at right) prepares to involve a group of Baywood School first graders in a guessing game.

Unleashed Dogs Maul Pet in Forest

By Pete Sarafian, Chapter Vice-Chair

In early December a trio of large, unleashed dogs attacked a local woman and her small, leashed dog in the Elfin Forest. One of the large dogs bit the much smaller dog and jumped at and threatened the woman when she rescued her pet. A young couple, the owners of the large dogs, were nearby and did little to stop the attack or rescue the victim. The small dog had to be rushed to a veterinarian for emergency medical attention. The woman, who was shaken by the incident, now is reluctant to walk her dog alone in the Elfin Forest.

This outrage underscores the importance of responsible pet ownership and use of leashes in public areas. Dogs, pack animals by nature, are prone to hunting instinct and predatory behavior unless socialized by humans. A County Ordinance that is legally binding requires dogs to be on leash or under immediate voice command unless they are in a fenced yard. Some local residents ignore this Ordinance regularly and open themselves to lawsuits, criminal prosecution, or dead or injured pets. They unquestionably are being irresponsible. The public has a right to visit local parks without danger from others' behavior. Please remind less responsible pet owners when you see them with a pet off leash that they are required to leash their pets.



School walks docent Dr. Les Bowker uses a rope and assigned roles as plants, insects, reptiles, birds and animals to help first graders from Baywood School understand what a food chain is.

Oakleaves E-mail Address

At the request of your editors, the SWAP computer guru, Bob Meyer, set up an e-mail address for Oakleaves to make it easier for you, our readers, to submit photos, letters to the editor, or interesting information. You can reach us at oakleaves@elfin-forest.net. We encourage you to contribute to what is really *your* newsletter.

California Legless Lizard

By Jean Wheeler Ph.D.

Photo by Pat Brown

This lizard unearthed by our Wonderful Weekend Weed Warriors on January 2 is difficult to recognize as a lizard! The California legless lizard (*Anniella pulchra*) is unable to do the pushups our commonly-seen western fence lizards do so amusingly on a sunny summer day on the boardwalk. In fact, it is rarely seen at all, certainly never enjoying the sun on the boardwalk. When it is disturbed in sandy soil or leaf litter, it is often mistaken for a snake.

These lizards without legs differ from snakes in having eyelids, which can be seen when they blink, and their internal skeletons and organs are those of lizards, not snakes. California legless lizards are about 3 to 7 inches long and very slender, looking like animated pencils.

They vary in color from dark brown to beige or even silver on top with a dark stripe down the middle of the back. Often other black stripes on the sides separate the darker back from the yellowish-green to grayish white of the underside. They have a blunt snout and smooth, shiny scales which aid them in burrowing through sandy soil. Like other lizards, they can jettison the tips of their tails to foil predators.

Legless lizards are much more tolerant of cold temperatures than are most lizards and are active in cooler weather, mornings and evenings. They are even nocturnal in warm weather. They occur sporadically in the coastal dune scrub, chaparral and valley foothill vegetation of coastal mountains in southern California, on the floor of the San Joaquin Valley, and the western slopes of the Sierra Nevada to as high as 6000 feet. At higher elevations, they hibernate in winter.

Mating of these slender snakelike lizards is in spring or early summer, with live birth of about two young between September and November.

California legless lizards forage from just below or on the surface of sandy soil or leaf litter at the base of herbs and shrubs. They seek adult beetles and other small insects (including termites), larvae, and spiders. They need to remain under cover most of the time, as they are in turn prey for snakes and alligator lizards; birds such as California thrashers, American robins, and loggerhead shrikes; and mammals as small as deer mice.



Shared Tranquility

By Debbie Levi

*"One touch of nature
makes the whole world kin"*

-- William Shakespeare

Grey-fence lizard
rests on well-lit
boardwalk planks
while sun casts
rays of warmth
and blankets all
with comfort.

In a nearby grove
a tired wren perches
on shady branches
among Moro Manzanita
leaves—relaxes after
a strenuous flight.

The eagle
flies through
distant blue,
soars beyond
clouds, completes
the day.

I absorb
the stillness—
allow peace;
allow soothing rhythms
of this symphony
to unite.

Scarlet Pimpernel

By Dirk Walters, Ph. D.; Drawing by Bonnie Walters

The plant profiled in this issue of Oakleaves is native to Europe and must be considered a weed, but a pretty one. Bonnie's drawing was done for the third edition of Dr. David Keil's and my plant taxonomy textbook. This common plant has a large number of common names including pimpernel, scarlet pimpernel, red chickweed, eye-bright, shepherd's clock, poison chickweed and poorman's weatherglass. Its scientific name is *Anagalis arvensis*. In my older wildflower books it tends to be called poorman's weatherglass whereas more modern guides name it scarlet pimpernel or just pimpernel.

Yes, it is a weed, but generally not a hated one. Somewhere, I remember reading that gardeners often give it benign neglect. That is, when they find it in their gardens, they leave a few plants and will even remove other more aggressive weeds from around it. They do this because the plant is prolific but easily removed and it grows in a short broad mound (less than 6 in. tall) with many smallish brightly colored flowers.

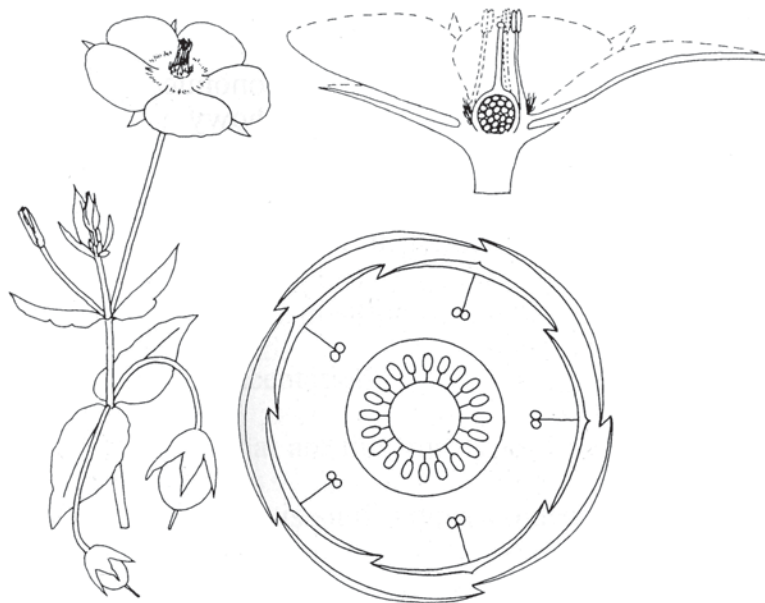
As one might guess from the common name, scarlet pimpernel, the flowers would be bright scarlet. And you would be correct if you encountered the species in the Eastern U.S. or Europe. But in coastal California, the flowers tend to be an orange-red or salmon color. I have no idea why we have a different color variant than elsewhere.

Yes, this is the same species that was used as a signature of the leader of a group who worked to save French aristocrats from the guillotine in the early days of the French Revolution. The tale was first a novel and then a play and a musical.

The 'chickweed' common names refer to the observation that this species has the same general habit and habitat as the common chickweed with which many of us lazy gardeners are already too familiar. Both have low spreading stems with leaves borne in pairs on opposite sides of the stem (opposite arrangement). However, where chickweed leaves appear narrow and elongate, scarlet pimpernel leaves are wide and resemble cross-sections of tiny green eggs (ovate).

The name poison chickweed refers to the plant's poisonous characteristics. According to Fuller and McClintock's *Poisonous Plants of California*, the entire plant contains a number of nasty compounds that give it an acrid smell. Human poisonings are rare, but it can be a major cause of livestock poisoning which has been a bigger problem in Australia and New Zealand than here in the United States.

Pimpernel flowers are about the same size (ca. 1/4 in. across) as chickweed flowers, but otherwise are as different as they can be. As stated above, the drawings reprinted here were originally done for a textbook and in doing so, Bonnie adhered to some conventions. However, the half flower drawing is an innovation created by her as a reaction to earlier conventions. Her drawing is a true half flower not just a diagram. She shows the flower parts present



behind the plane of the cut as well as those that would be made visible by the cut. The other diagram is called a floral diagram which shows the flower parts in their proper relationship as seen looking straight into the flower.

Comparing the two drawings, you will find five fused petals with five stamens just inside them. In most plants, stamens are placed between the petals or petal lobes. But in pimpernel the stamens line up with the center line of the petals (stamens opposite the petals). This condition is relatively rare and is shared with other members of its family, Primulaceae. In contrast, our common chickweeds have separate, white, deeply 2-lobed petals.

That said, chickweeds and pimpernels do share how the seeds are placed within their fruit. Both of them produce dry fruit that open to release the seeds (capsule). In both, the capsule contains a single, undivided cavity. From the base of the cavity a single central fleshy column arises to which the seeds are attached. This type of seed attachment or placentation (free-central) is also relatively rare. Pimpernel capsules break open via a horizontal ring around their middle such that the top of fruit falls away like a cap. In contrast, chickweed capsules open at the top via 5-10 short vertical breaks that result in 5-10 teeth around the opening.

One last common name requires explanation, and that is poorman's weatherglass. This name refers to the observation that pimpernel flowers are fully open only in bright sunshine when light is high and humidity is low. But as humidity rises and/or clouds begin to thicken in preparation for a storm, pimpernel flowers begin to fold up. So, if you are busy in the garden and you notice your pimpernel flowers closing, it means rain is due. We also might recall that getting our weather forecasts from newspapers, radio and television is a recent phenomenon. Before then, farmers had to do their own forecasting and they used whatever they could find that worked.

Editors Note: Scarlet pimpernel can be seen from the boardwalk in the celestial meadow area of the Elfin Forest from March to June.

Elfin Forest's Supervising Park Ranger Retires



Chuck Lowe, as Supervising Park Ranger for the Pecho District, has watched over the Elfin Forest since 1994. Under his supervision, County Parks Rangers have seen to the care of the boardwalk, repair of damage to interpretive panels and benches, posting of park regulation signs, removing trash and regular patrolling of the Forest.

In December, 2009, Chuck announced his retirement. Some of the SWAP regulars took him to lunch to thank him for his dedication to the Elfin Forest, and presented him with a framed Elfin Forest mural print. Chuck and his wife Bonnie are enjoying going on hikes and catching up on reading. There is a family farm that Chuck needs to attend to, but we hope to have him join us from time to time as a Weed Warrior. Our new contact person is Bob Yetter, Chuck's former assistant.

Photo by Bob Meyer.

CCC Offers Work Day

By Pete Sarafian, Conservation Chairperson

On November 23 the California Conservation Corps (CCC) supplied a work crew for another day's work in the Elfin Forest. The Morro Bay National Estuary Program (MBNEP) supplied the money to pay them from a current conservation grant to SWAP. The corps members pulled panic veldt grass (*Ehrharta erecta*) all morning from an infestation adjacent to the Forest near 10th Street. They piled the weed debris in a large heap in County right-of-way. SWAP can now control the spread much easier by localized chemical spray to kill any sprouts. In the afternoon, the crew helped install several erosion bars along the southern section of the boardwalk. The hillside had been draining and creating erosion channels that cut through the Forest and under the boardwalk. Thanks to the CCC and MBNEP for helping to prevent a new infestation from invading the Elfin Forest and for stemming erosion. ***Your partnership has been invaluable. We couldn't have done so much restoration without your help.***



Elfin Forest Sightings

Although they know that the word "Elfin Forest" refers to the short trees and shrubs that grow in the forest, many SWAP members can be heard to say, "the elves would be happy about that," when something good happens in the Elfin Forest. Recently, two happy little elves did appear in the Forest, each sitting cheerily under a shrub. No one will admit to placing them there, but it is fun to point them out to visitors.

Photos by Bob Meyer and Jean Wheeler



Please Report Elfin Forest Sightings

Have you observed any unusual birds in the Elfin Forest? Mammals? Reptiles? Amphibians? Insects? Interesting activities or footprints of wildlife in our Elfin Forest? Unusual plants? Please report any interesting sightings to your Oakleaves editors at: oakleaves@elfin-forest.org for inclusion in future issues under "Elfin Forest Sightings." You can also leave a message on SWAP's answering machine, 528-0392.

Weed Warriors

By Pete Sarafian, Conservation Chairperson
photos by Yolanda Waddell

November Work Party Stops Erosion

The Wonderful Weekend Weed Warriors shifted gears in November. They removed some old straw wattles from the Elfin Forest that had deteriorated over the years. SWAP had left them scattered in areas where they had been installed. They needed to be cleared out or reconstituted to back up newer wooden erosion bars. Rich and Prisila Johnson worked on clearing out sand from erosion bars on street trails to keep the sand from traveling into the adjacent streets. While Bob and Sharon Meyer removed veldt grass from the area near the 16th Street parking lot, the rest of the warriors helped to install more wooden erosion bars. Warriors placed them south of the boardwalk between 13th and 14th Streets. Also joining in the fun were Steve Cake, Alon Perlman, Pete Sarafian, Charlie Sitton and Yolanda Waddell. It was a very productive work party and thanks to all who helped.



Installing 4 x 4 erosion control bars near the boardwalk during the November work party were (L-R) Charlie Sitton, Alon Perlman, Pete Sarafian, and behind Pete, Rich Johnson.

December Elves Vanquish Veldt

There is another vulgar veldt grass threatening the Elfin Forest. As you may remember the first type, *Ehrharta calycina*, has been around Los Osos for several decades. A second type, *Ehrharta erecta*, so-called panic veldt grass, prefers shady areas rather than open sunshine. It had infested about half an acre under pygmy oaks in SLO County right-of-way. This infestation, adjacent to the Forest at the end of 10th Street, was supplying seeds to infest the Elfin Forest. Stalks were up to three feet in height. After some preparatory removal by the California Conservation Corps in November, the Weed Warriors cleaned up what was left. The Warriors' crew included Steve Cake, Otis Carter, Lannie Erickson, Rich and Prisila Johnson, Bob Meyer, Ron Rasmussen, Pete Sarafian, Charlie Sitton, and Yolanda Waddell. Thank you so much for preventing this latest infestation from breaking out all over our beloved park.



Pete Sarafian displays an example of the "panic" veldt grass that was pulled in great quantities at the west end of the Forest during the December work party.

SWAP First Saturday Work Parties

SWAP First Saturday Work Parties are held at 9 a.m. to noon on the first Saturday of each month. Please dress for wind, fog, or sun. Layers work well. Long pants and long-sleeved shirts are good. Sturdy shoes are a must. Meet at the north end of 15th Street at the Elfin Forest entrance. Take care not to park in front of driveways or mailboxes. Call 528-0392.



OAKLEAVES

is published six times per year beginning in February.

Co-editors are Yolanda Waddell and Jean Wheeler;
layout is by Katy Budge. Editing assistance by Pat Grimes.

Contributors to this issue: Pat Akey, Pat Brown, Betsy Kinter, Debbie Levi, Bob Meyer, Ron Rasmussen, Pete Sarafian, Charlie Sitton, Yolanda Waddell, Dirk and Bonnie Walters, and Jean Wheeler.

Printed at Hay Printing, Morro Bay on recycled paper.

Labeled and mailed at Achievement House.

Deadline for copy to Oakleaves is the first Wednesday before the month of issue.

If possible, all copy should be submitted by e-mail to:
oakleaves@elfin-forest.org.

Let's All Pull Together

Let us March forth and tear up some grass;
Show all the world that we have some class.
It's never too late to punish the veldt,
So now you know how angry I've felt.

This horrible grass invaded my dreams,
And pushed away thoughts of rainbows/sunbeams.
The bunnies may like it, but as you can tell,
I'd just as soon send it to herbaceous hell!

*Yours in the cause of conservation,
Pete Sarafian*

Coming Up in the Elfin Forest

Story and Photos By Jean Wheeler

With the early, copious, and well-spaced rains we've had already this season, we are off to a fine start on a wonderful wild-flower display this winter and spring. The Elfin Forest is already ablaze everywhere with the white to light lavender spikes of buck brush ceanothus, and the morro manzanitas are covered with their pink and white bells.

Red splashes of color are provided by low-growing California peonies with their lush green leaves (pictured at right, below) and the taller fuchsia-flowering gooseberries with their smaller green leaves and sharp thorns. White flowers also adorn the toyon, hollyleaf cherry, California blackberries, and croton at this time of year. A native vine that has small white blossoms with yellow centers is wild cucumber.

Yellow and orange flowers common to this season include sea-side fiddleneck, golden yarrow and seaside golden yarrow, California poppies, and sticky monkey-flowers.

With the unusually generous water supply and lushly responding vegetation, both our year-around resident birds and those here on winter vacation will be very busy gathering food for either the nesting they are about to engage in here, or for their long flight back to their summer nesting areas to the north.

Look for such full-time residents as Anna's hummingbirds feasting on the tubular red flowers of the gooseberries. Busy little birds like Bewick's wren or bushtits will be flitting around the tops of the bushes. Larger full-time residents like California and Spotted towhees and California thrashers (pictured at right, above) are a little harder to see, darting around mostly within shrubs, but sometimes perching on top of branches. California quail scurry around on the ground.

Winter visitors (such as ruby-crowned kinglets, American robins, and several species of sparrows) are nearing the end of their stays here, and will soon head north or up into high mountains. They'll be joined by migrants passing through from wintering sites in Middle and South America, such as rufous and Allen's hummingbirds.

All of our winter water birds are still here by the thousands at least through February. This includes all ducks and geese, all wading birds, and all grebes listed in our Pocket Guide (sold on page 11). American avocets and most sandpipers are also here through March. Enjoy the wonderful birding opportunities of these busy months within the Elfin Forest and on the waters of beautiful Morro Bay National Estuary as seen from Bush Lupine Point and Siena's View overlooks.

Enjoy the wonderful birding opportunities of these busy months within the Elfin Forest and on the waters of beautiful Morro Bay National Estuary as seen from Bush Lupine Point and Siena's View overlooks.



During the November work party, Charlie Sitton spotted this large chewed-on boletus mushroom, encouraged by October rains, growing next to the boardwalk. Photo by Yolanda Waddell.

To see more amazing Elfin Forest fungi, join our Fungus Foray on February 20, at 9:30 a.m. See page 9.

WALKS in the ELFIN FOREST

Third Saturday Walks

February 20, 9:30 a.m. – Fungus Foray

For our annual Fungus Foray in the Elfin Forest, intrepid leader and fungophile Dennis Sheridan will take us on an exploration of the Elfin Forest floor for wood bluetts, black elfin saddles, earthstars, golden caps, boletes, poisonous amanitas and many other fascinating fungi. Bring a magnifying lens and, if you have a mystery mushroom in your yard, bring a sample for Dennis to identify. This is not a mushroom collecting walk, as all plants in the Elfin Forest are protected by law. Only a very heavy rain will cancel the walk.

Note: February 20 is the correct date, NOT February 16, as mentioned in our December/January Oakleaves.

March 20, 9:30 a.m. – Ecology Walk

Join ecologist Les Bowker for a walk in the Elfin Forest. Discover why the Elfin Forest and the adjacent estuary can be considered 'severe' environments. What factors make these environments difficult to live in? What strategies do organisms employ to cope with or overcome these difficulties? Obviously the strategies are successful because the organisms are living there. But, are there costs and benefits to various strategies? Come and find out.

April 17, 9:30 a.m. – Butterfly Walk

Join butterfly enthusiast Pat Brown on a tour of the Elfin Forest from a butterfly's point of view. Pat has taken many photos of butterflies in all stages of development from eggs to mature butterflies, and will share them along with fascinating butterfly facts. She'll point out some of the plants that are host to butterflies, and will lead you to hang-outs of Variable Checkerspot, Moro Blue, Swallowtail, Hairstreak and other butterflies that make the Elfin Forest their home. She will also share information about butterfly books, web sites and butterfly-related materials. She recommends that you bring a hand lens and a pair of close-focusing (5-10 ft.) binoculars.

Walks in the Elfin Forest begin at times stated above. Park at the north end of 15th Street (16th Street for wheelchairs) off Santa Ysabel in Los Osos. Walks begin on the boardwalk at the end of the 15th Street path. Wear comfortable shoes, long sleeves and pants to avoid poison oak and mosquitoes. Please park carefully, avoiding driveways and mailboxes. Please leave pets at home. The easy paced walks last 1-1/2 to 2 hours. For more information call (805) 528-0392.

The Morro Bay Bird Festival places all of the non-profit information tables together in the same room. This gives SWAP booth workers the opportunity to talk to, and get valuable ideas from, representatives of organizations such as U.S. Fish and Wildlife Service and the Carrizo Plain National Monument. Shown at right at our colorful information table are (L-R) Pat akey, Pat Murray and Ron Rasmussen.

Photo by Yolanda Waddell.

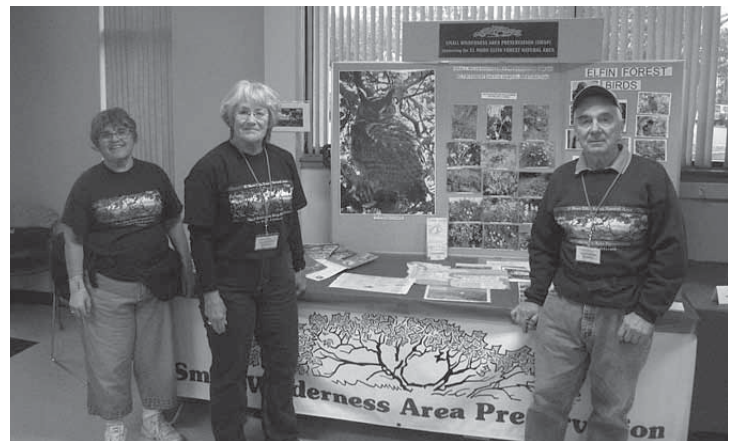


Shari Sullivan, Education and Outreach Coordinator for the MBNEP (Morro Bay National Estuary Program), gave a very informative walk and talk about the Morro Bay Estuary and its watershed.

Photo by Yolanda Waddell.



Soil Scientist Dr. Jim Brownell, retired from Cal State Fresno, fascinated walk attendants with his descriptions of soils and how they affect all life in the Elfin Forest. Photo by Yolanda Waddell.



Thank You to Our New and Renewing Members

Compiled by Betsy Kinter, SWAP Database Coordinator

NEW MEMBERS:

Sandy Baer

Jan Harper

RENEWING MEMBERS:

Donna and John Banks

Marilyn Moore*

Rosemary Baxter

Donna Murphy*

Wendy Brown*

James and Barbara Murray*

Steve and Sue Burns*

Pat Murray*

Stephen Cake*

Billy R. Pewitt

Alice L. Cushing*

Joan V. Powell*

Suzanne Dannenbring*

Darlene M. Reynolds*

Robert and Gail Davis

Monica Rowcliffe

Tim and Kathy Dugan

Dr. Jan W. Simek*

Martha and Leon Goldin*

David and Helianthe Stevig*

Chet and Lee Grimes*

Alyce Thorp

Clement H. Jeffrey*

and Bob Mayberry*

Howard and Donna Krueger*

Kathleen W. Toscano*

Peggy Mayfield

June Wright

Wendy McKeown

SPECIAL DONATIONS:

William Bouton and Patricia Price – special donation

Dr. Ellen Davies – Big Sit 2009

Andrea R. Davis – special donation

Thomas and Michele Esser – special donation

Laurence L. Laurent – special donation

Ron Weaver – Big Sit 2009

Marisa Waddell – in honor of Yolanda Waddell

Yolanda and Jay Waddell – Big Sit 2009

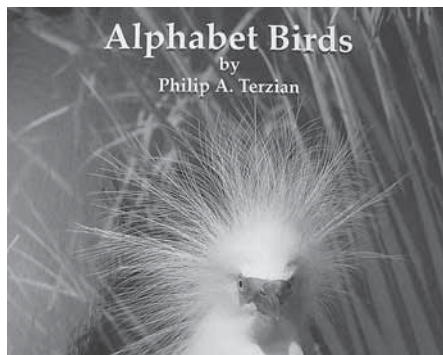
**Thanks to those listed above who donated more than the \$25 (regular) or \$15 (senior or student) membership dues. The additional donations will be used for special projects in the Elfin Forest.*



Frances Williams of Nipomo (in wheelchair) visited Rose's Grove with her family on the first day that the new accessible boardwalk and deck were open. As seen here, she was accompanied by her granddaughter, Yanglei Cato of Artlington, Virginia. Frances thinks that Rose's Grove is "Beautiful – quiet and peaceful." Photo by Bob Meyer.

Oakleaves Welcomes www.slocoastjournal.com

An excellent new online monthly journal is now covering the coast from Los Osos to Cambria. Unhappy with the dearth of journalistic coverage of our area after the recent demise of the Sun Bulletin, Judy Sullivan decided to fill the vacancy with an online journal. The journal features the business of our towns, nature and environmental issues, life on our coast and events scheduled, and the arts on our coast. Oakleaves editor Jean Wheeler is contributing a page called Elfin Forest Activities each month. A growing number of outstanding writers, artists, and photographers are contributing regularly to this journal, which appears online on the first of each month. The February issue should be online about the time you receive this issue of the Oakleaves; so click on www.slocoastjournal.com and check out what's happening in our busy and beautiful region.



Alphabet Birds: Book for Kids

The newest treasure SWAP is selling is this wonderful book by Philip A. Terzian with gorgeous pictures of birds, one for each letter of the alphabet. The facing page features a clever little poem for each bird in large-sized text and child-appropriate wording.



SWAP Shoppers' Order Form

See Photos of All Items at www.elfin-forest.org

All Prices Include Sales Tax

1. MURAL SHIRTS

Mural design by artist Barbara Rosenthal on both front and back. Words on shirt: "El Moro Elfin Forest Natural Area" above mural and "Small Wilderness Area Preservation" and "Los Osos, California" below mural.

Circle Sizes:

___ Short Slv. T-Shirt (S, M, L, XL) @\$19.00 = \$___
 ___ Short Slv. T-Shirt (XXL, XXXL) @\$22.00 = \$___
 ___ Long Slv. T-Shirt (S, M, L, XL) @\$23.00 = \$___
 ___ Long Slv. T-Shirt (XXL, XXXL) @\$25.00 = \$___
 ___ Sweatshirt (S, M, L, XL) @ \$25.00 = \$___
 ___ Sweatshirt (XXL, XXXL) @ \$27.00 = \$___

2. PHOTOS OF THE ELFIN FOREST

Original photo note cards by Bob Meyer

___ @ \$3.00 or ___ set of 5 @ \$14.00 = \$___

Original photo postcards by Bob Meyer

___ @ \$1.00 = \$___

Indicate No. per View(s):

___ All 5; ___ Don Klopfer Trail; ___ Ocean View;
 ___ Wild Hyacinth; ___ Horned Lizard; ___ Dudleya

3. POCKET GUIDE

Useful 56-page guide to plants and animals of the Elfin Forest. Charts for bloom season, form, color, and habitat for 200 vascular plants plus lists of lichens and mushrooms known to occur. Habitat and peak months seen are charted for 187 birds. Also listed: 28 common mammals; 10 reptiles; 4 amphibians; 19 butterflies and moths (charted by size, months in flight, color, and host plants); 104 other arthropods and 7 gastropods.

___ @ \$2.00 = \$___

4. ELFIN FOREST MURAL PRINTS

signed prints by artist Barbara Rosenthal, image size 4 1/2 x 16 1/2 in; mounted on foamcore

___ @ \$20.00 = \$___

5. 2010 ELFIN FOREST CALENDAR

sold out!!

6. ALPHABET BIRD BOOK

With clever verses and superb photos, this book is sure to please young and old.

___ @ \$21.65 (including tax) = ___

Shipping costs within zip 934 __:

Bird Book, \$2.77 (book rate) per book = ___

Pocket Guides & Note Cards \$1.50 = ___

Mural Prints on Foamcore \$5.00= ___

Shirts each: \$4.00 = ___

For shipping costs outside 934 __, call (805) 528-0392

TOTAL OF ORDER \$___

(Please print when filling order, and indicate how many of each)

Name: _____

Address: _____

City/State/Zip: _____

Email _____

Phone (w/area code) : _____

Make checks payable and mail to:

SWAP, P.O. Box 6442, Los Osos, CA 93412-6442.

Call-in orders may also be made: (805) 528-0392.

SWAP is now selling a new book
for children: Alphabet Birds. See page 11.

Los Osos / Morro Bay Chapter
SMALL WILDERNESS AREA PRESERVATION
A Non-Profit Public Benefit Corporation
P.O. Box 6442, Los Osos, CA 93412-6442
(805) 528-0392 www.elfin-forest.org



*Address Service Requested
Per Name or Current Resident*

Non-Profit Org.
U.S. Postage
PAID
San Luis Obispo, CA 93402
Permit No. 112



Are You Current?

Every membership helps us to be more convincing to foundations and government agencies when we ask them for funds. They all want to know "How many members do you have?"

Please look at your mailing label and see if your membership is current. The date on the label shows when your membership expires. After that date, we will not be able to send you our newsletter. Timely renewal of your membership helps us to save on postage and the time needed to send a reminder.

Thank you for supporting SWAP and the Elfin Forest!

MEMBERSHIP FORM

Name _____
Address _____
City/State/Zip _____
Email _____
Phone _____

- | | |
|--|--|
| <input type="checkbox"/> New Member | <input type="checkbox"/> Renewing Member |
| <input type="checkbox"/> Member \$25 | <input type="checkbox"/> Defender \$100 |
| <input type="checkbox"/> Steward \$50 | <input type="checkbox"/> Champion \$250 |
| <input type="checkbox"/> Protector \$75 | <input type="checkbox"/> Guardian \$500 |
| <input type="checkbox"/> Seniors & Students \$15 | |
| <input type="checkbox"/> Life Member \$1000 | |

☐ I want to help, please call me!

Memberships include a subscription to SWAP's bimonthly newsletter, *Oakleaves*. All donations to SWAP are tax-deductible.

EVERY membership counts!

Make checks payable to: SWAP.

Mail to: Small Wilderness Area Preservation,
P.O. Box 6442, Los Osos, CA 93412-6442.